



MONTHLY MEMBERSHIP PROGRESS REPORT

District A 5

Results as of: 10/31/2017

GMT: CHRIS LEWIS

LOCATION ONTARIO

GMT CA

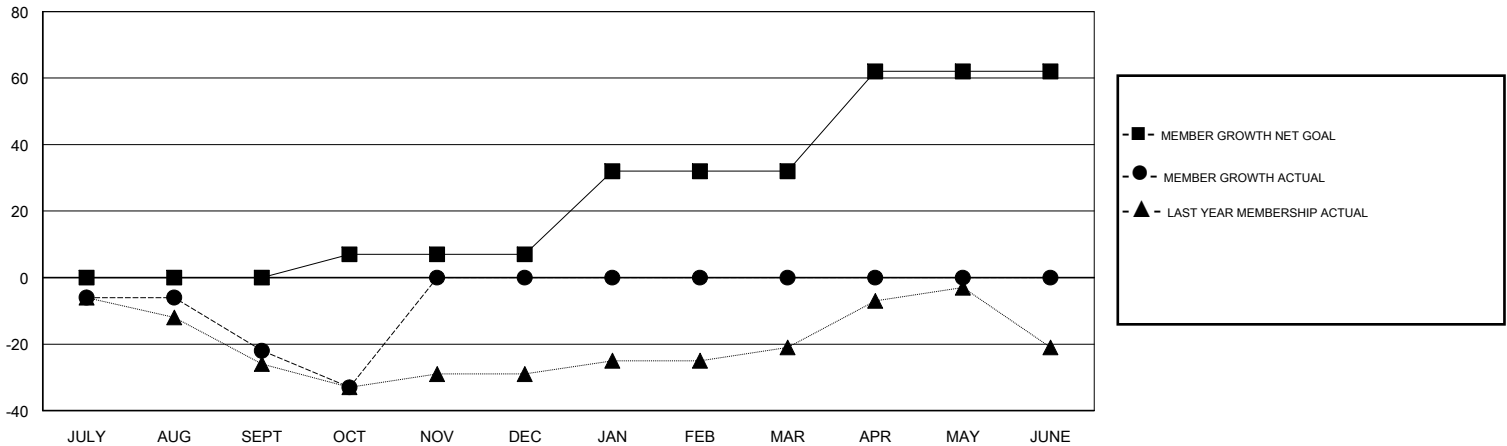
Clubs			
RESULTS FOR 2017-2018			
QUARTER	NEW CLUB GOAL	NEW CLUBS	DROPPED CLUBS
JULY/AUG/SEPT	0	0	0
OCT/NOV/DEC	0	0	0
JAN/FEB/MAR	1	0	0
APR/MAY/JUNE	1	0	0

Members			
RESULTS FOR 2017-2018			
QUARTER	MEMBER GROWTH NET GOAL	MEMBER GROWTH ACTUAL	DROPPED MEMBERS ACTUAL (including transfers)
JULY/AUG/SEPT	0	11	30
OCT/NOV/DEC	7	9	17
JAN/FEB/MAR	25	0	0
APR/MAY/JUNE	30	0	0

GOALS AND ACTUAL NEW CLUBS CUMULATIVE



GOALS AND ACTUAL MEMBERS CUMULATIVE



DROPPED CLUBS: 0	12 CLUBS OF 53 ADDED 1 OR MORE NEW MEMBERS	<u>GENDER DISTRIBUTION</u> MALE 726 (59.56%) FEMALE 493 (40.44%) Women Percentage Fiscal Year Goal: 30%
<u>DROPPED MEMBERS</u> DECEASED 11 CLUB CANCELLED 0 OTHER 36 TOTAL 47	CLICK HERE FOR CUMULATIVE MEMBERSHIP DATA	TOTAL FAMILY UNIT MEMBERS 229 FAMILY MEMBERS PAYING HALF DUES 115